

HOTEL MATTHIAS REX

Historic hotel in Buda Castle

244 Hungarian authorities have recently approved the design of the luxury-class HOTEL MATTHIAS REX and allocated a fund of 120 million forints for the project—which is to add to the Budapest hotels chain a unique historic flavour. The site itself, as the hotel is to go up in Buda Castle, has deep historic associations and ambiance, being surrounded by splendid monuments.

The hotel is to be built near the Matthias, or Coronation Church, one of the main landmarks of the Buda Castle skyline. After the 13th century, the site was occupied by a Dominican abbey-church which became a cultural centre of national importance during the reign of Hungarian Renaissance King Matthias.

This building was destroyed during the Turkish occupation of Hungary. The Jesuit boarding school built in its place became the seat of the Royal Treasury, later the Ministry of Finance from the end of the 18th century. During the siege of Budapest in the winter of 1944-1945, the building was completely gutted and only the front wall and the ground-floor vaults remained in a state of repair to be of any use at all for the reconstruction work.

The designers of the new hotel were actuated by the desire to use as much as possible of the remaining valuable structures. The wing of the abbey church nearest the Matthias Church will be restored while the rest of the wings will be built in keeping with the requirements of modern architecture. Guests will enter by the ancient front-door, and the Baroque vault structures near the entrance will be preserved in their original form. The entrance hall of the hotel will occupy the site of the old abbey church nave, whose original vault formations will be restored. On one side, the hotel will have a glass wall which will provide a beautiful view over Budapest. In the ground-floor part of the ancient Nicholas Tower, a historic-atmosphere drink bar will be at the guests' disposal.

Suites for all tastes

The designers have perhaps made the best job of the inner arrangement of rooms and the provision of all the comforts luxury-type hotel rooms should have. In one wing of the hotel, two-level suites will be built with an ante-room, sitting room, and various adjoining service rooms on the ground floor, and bedrooms, bathrooms and wardrobe rooms upstairs. But every hotel room will be double and with bathroom. The period furniture and ornamentation of the rooms will be different according to floor levels: there will be mediaeval, Romantic, Baroque, Louis XVI, Hungarian folk-art and modern style suites. This variety in styles will also characterize the dining rooms in the catering wing. The ground floor of

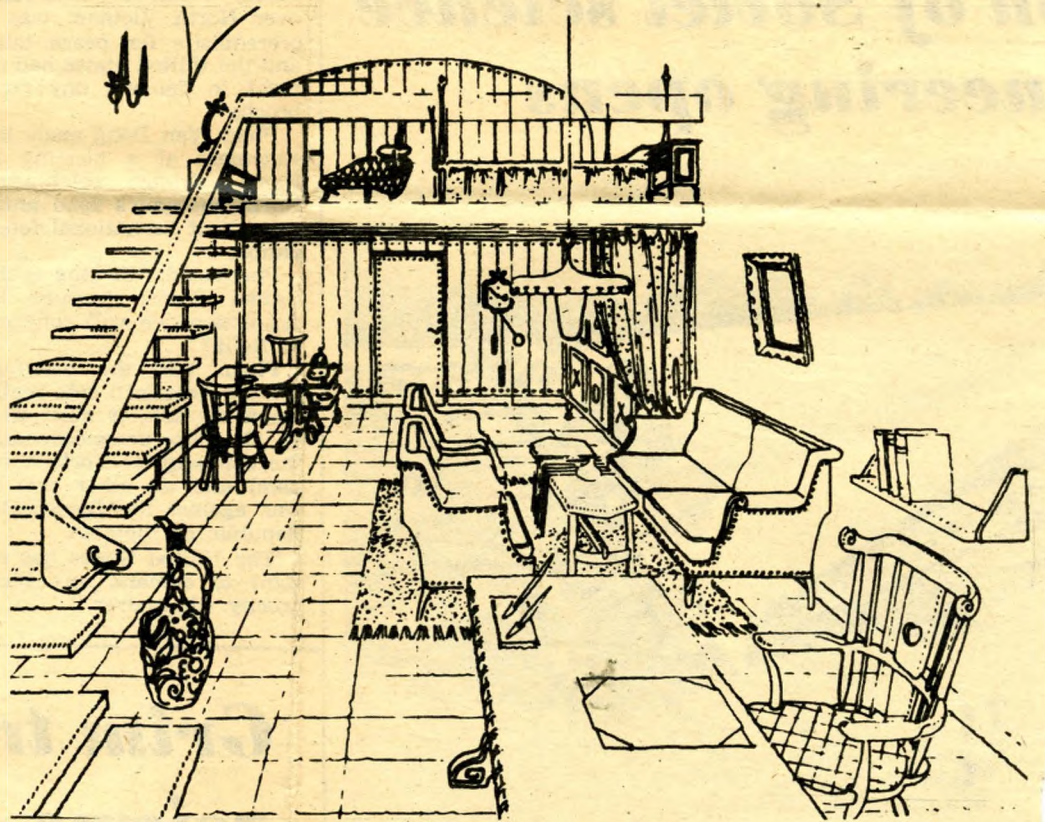
the hotel will have four halls for conferences and meetings.

A modern two-floor annex to the hotel will have the hair-dressing, souvenir, tobacconist, and other shops, a news-kiosk, etc. On the side towards the Danube,

there will be a cake and espresso coffee shop from whose terrace the guests can reach the hotel's "garden of ruins," presenting relics of great historic and artistic value. A covered parking lot in the basement will hold 100 cars. The mediaeval cel-

lar will be turned into a wine shop and night club.

HOTEL MATTHIAS REX, with its historic atmosphere and high-class services, is expected to become an internationally known hotel of high standing, following its inauguration in 1970.



Interior of a two-level suite in HOTEL MATTHIAS REX